



FIRE SERVICE IN THE SAN DIEGO REGION

STRUCTURE

FUNCTION

COLLABORATION

BEFORE WE START...A SHORT GROUP TEST

- Schedule?
- Daily Activities?
- Difference between a Fire Engine and a Fire Truck?
- What are most 911 calls for?
- Why do firefighters wear red suspenders?

STRUCTURE

The San Diego region's fire service consists of 6 different types of agencies that serve 4 geographic Zones:

- Federal (4)
- State (2)
- City (18)
- District (10)
- Tribal (5)
- Private (2)



4 ZONES

- **Metro** (*Dispatched by San Diego Fire Rescue*)

- San Diego City

- City of Chula Vista

- City of Imperial Beach

- City of Coronado

- City of Poway

- National City

4 ZONES

- **East** (Dispatched by Cal FIRE San Diego Unit)
 - CalFIRE
 - San Diego County FPD
 - US Forest Service
 - Fish and Wildlife Service

4 ZONES

- **North** (Dispatched by North County Communications JPA)

- City of Encinitas
- City of Solana Beach
- City of Oceanside
- City of Vista
- City of San Marcos / FPD
- Rancho Santa Fe FPD
- City of Del Mar
- City of Carlsbad
- City of Escondido / Rincon FPD
- North County FPD
- Valley Center FPD
- Pala Tribal FD

4 ZONES

- **Central** (*Dispatched by Heartland Communications Facility Authority JPA*)

- Bonita Sunnyside FPD

- San Miguel FPD

- City of El Cajon

- City of La Mesa

- City of Lemon Grove

- City of Santee

- Alpine FPD

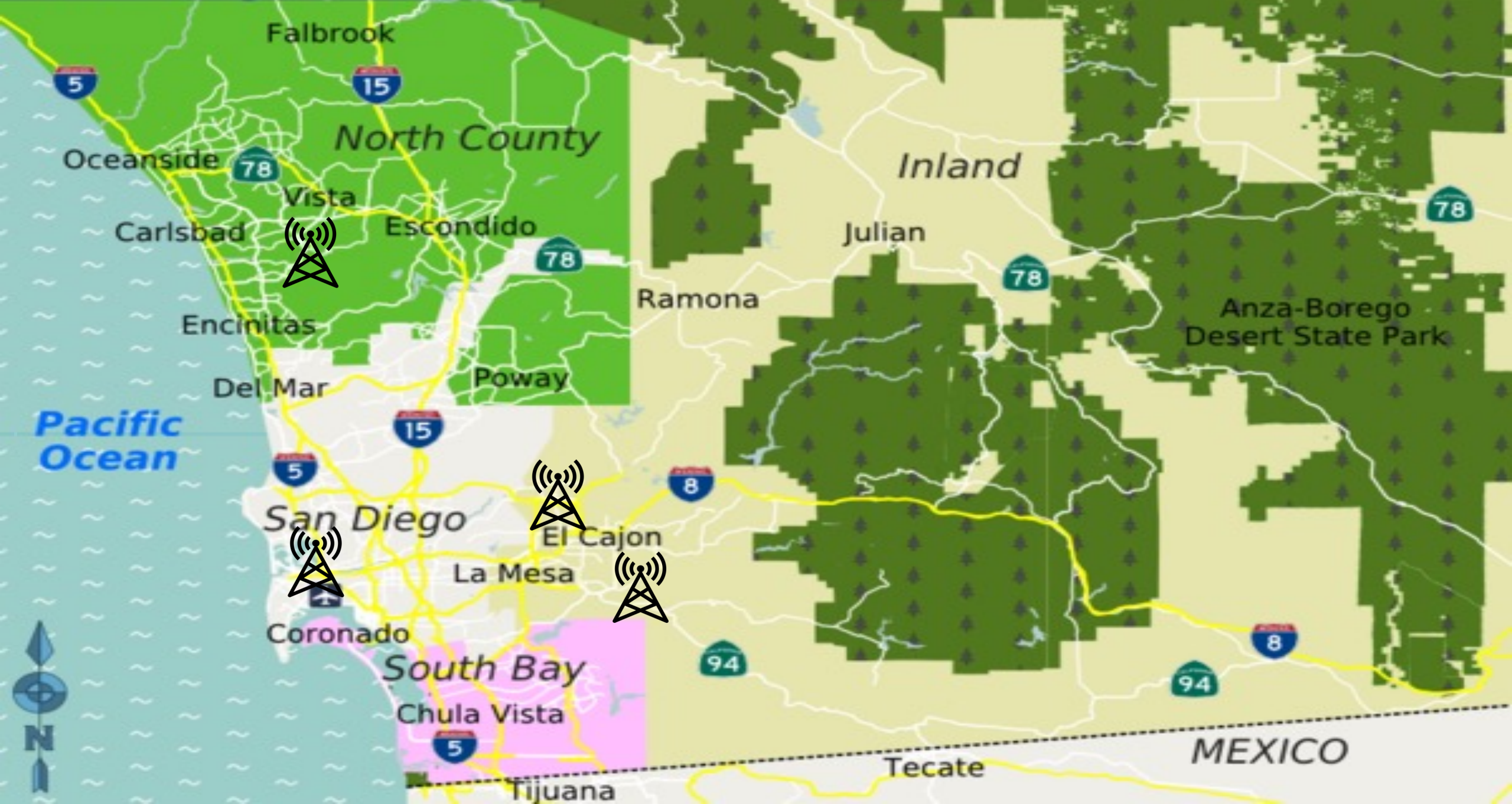
- Lakeside FPD

- Barona Tribal FD

- Sycuan Tribal FD

- Viejas Tribal FD

San Diego County



FUNCTION

In what ways do all these different agencies work together to serve the citizens of the San Diego County region?

- Border Drop
- CAD, AVL and Dispatch
- Mutual Aid / Automatic Aid
- Countywide Operational Policies
- Training





BORDER DROP

- All Fire Agencies in San Diego County operate for the most part, like one big Fire Department.
- The closest appropriate fire apparatus responds regardless of jurisdictional lines.

CAD AND AVL

Each 911 Dispatch Center can request and assign units across Zone boundaries using Computer Aided Dispatch (CAD).

They are able to do this seamlessly because of Automatic Vehicle Locators (AVL) on every rig that allows dispatch to see their location in real time.

This happens multiple times every day and allows for the most efficient use of resources across the region.

DISPATCH

- When you call 911 from a cell phone it goes to the CHP first and then gets routed to the appropriate Dispatch Center based on location given by caller. Some 911 cell phone calls go directly to the appropriate 911 Center using geo-location as well.
- When you call 911 from a landline, the PSAP (Public Safety Answering Point) lets the dispatcher know your location.
- Once the nature of the 911 call is determined by the dispatcher, the CAD uses the AVL and response plan to select the closest appropriate units.
- This all happens in less than a minute.

MUTUAL AID

- A written agreement between two or more agencies for shared services.
- Typically outlines the rules and limitations of those shared services.



AUTOMATIC AID

- No formal agreement is needed.
- This typically occurs between two neighboring agencies who work and train closely together.
- Is also very common within a Zone.



COUNTYWIDE OPERATIONS POLICY MANUAL

- A living document that every Fire Agency in San Diego utilizes.
- Created collaboratively by the San Diego County Fire Chiefs Association and its 7 sub-sections.
- Each Zone has its own Operations Manual that addresses more specific Zone-centric policies like communications, move-ups and response plans.

Type 1 Engine Strike Team Rotation						
2022						
Time Period	Engines					
January	01-15	E3	E38	E19	E25	E13
January	16-31	E10	E21	E17	E27	E63
February	01-15	E22	E9	E3	E38	E25
February	16-29	E13	E10	E19	E17	E27
March	01-15	E63	E21	E9	E3	E38
March	16-31	E22	E25	E13	E10	E17
April	01-15	E27	E63	E19	E9	E3
April	16-30	E38	E21	E25	E13	E10
May	01-15	E22	E17	E27	E63	E9
May	16-31	E3	E38	E19	E25	E13
June	01-15	E10	E21	E17	E27	E63
June	16-30	E22	E9	E3	E38	E25
July	01-15	E13	E10	E19	E17	E27
July	16-31	E63	E21	E9	E3	E38
August	01-15	E22	E25	E13	E10	E17
August	16-31	E27	E63	E19	E9	E3
September	01-15	E38	E21	E25	E13	E10
September	16-30	E19	E17	E27	E63	E9
October	01-15	E3	E38	E21	E25	E13
October	16-31	E10	E19	E17	E27	E63
November	01-15	E21	E9	E3	E38	E25
November	16-30	E13	E10	E19	E17	E27
December	01-15	E63	E21	E9	E3	E38
December	16-31	E19	E25	E13	E10	E17

ST T1 Units rotate in following order: E38, SMG, E25, E13, E10, SMG, E17, E27, E63, SMG, E9, E3

Note: SMG can only provide one T1 unit every week. For simplicity, CZ will skip the 2nd SMG unit when 2 SMG units fall in the same weekly rotation. The SMG T1 units will rotate as follows: E19-E21-E22. This is in consideration for the Alternate agency to have the ability to staff accordingly.

TRAINING TRAINING TRAINING.....

- In-house training (daily)
 - EMS, agency specific equipment, step tests...
- Zone training (monthly+)
 - Multi unit drills, Zone specific policies, strike team deployment...
- Countywide training (annually+)
 - Wildland drill, Multi casualty drill, Active shooter drill...



